

**Test Method**  
**Potency Analysis by**  
**High Performance Liquid Chromotography**

**Findings**

- Stronger than advertised
- Exactly as advertised
- Less than advertised

Test Accreditation #: 77802

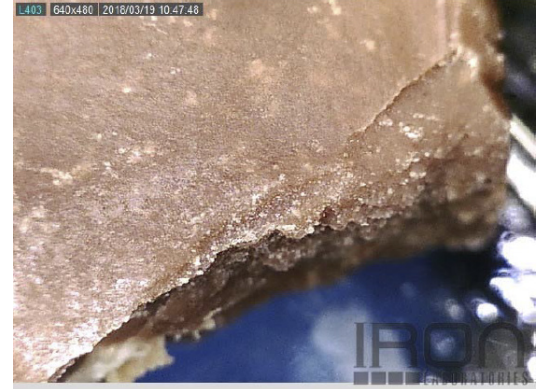
Test Certificate #: 104358-001

**Sample ID#: 104358**

Test Date: 03/16/2018

Sample Details

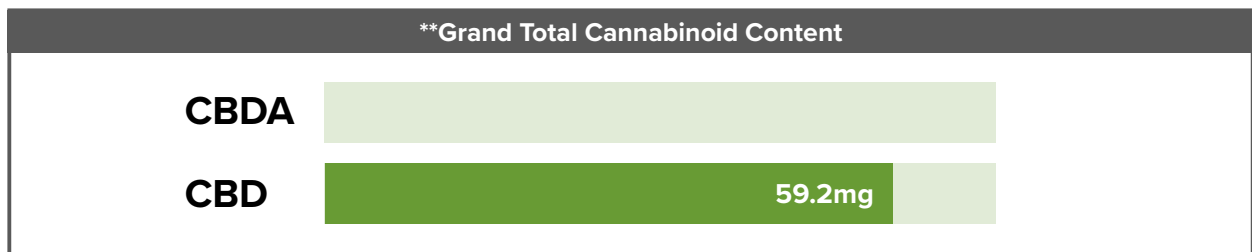
**Product:** Therapeutic Chocolate 60mg  
**Sample ID:** 031618AMC60  
**Sampled Product:** Infused Product  
**Method:** FE04 HPLC1100-1  
**Molds/Pests:** N/A



Simple Overview

**Advertised:** 60mg per bar (74g)  
**Results:** 0.8mg CBD per 1g  
**\*\*Grand Total:** 59.2mg CBD per bar (74g)

| Test Compounds                  | CBDA     | CBD        | TOTAL    | CBD Activation                      | THC              |
|---------------------------------|----------|------------|----------|-------------------------------------|------------------|
| Amount                          | N/D      | 0.8 mg/g   | 0.8 mg/g | 100%                                | N/D <sup>†</sup> |
| Min. Value                      | 0.1 mg/g | 0.1 mg/srv | -        | N/D                                 | -                |
| Amount per Serving <sup>~</sup> | N/D      | 0.8 mg/g   | 0.8 mg/g | <b>Serving Size<sup>~</sup> (g)</b> | -                |



All lab testing is performed by a third party facility at one of the labs listed below. The results are taken from a sample of this product. This Certificate of Analysis (COA) is for internal use only and shall not be replicated or shared without written approval from CBD Guru.

\*\*Grand Total is determined by calculating the results from the sample size to the total product weight.

†This passes our quality control guidelines for non-psychoactive industrial hemp oil. For questions or concerns, please contact us.



ISO/IEC 17025:2005 Accredited



Management Signature